



Decorative banner with a hand-drawn border. Inside the border, there are two blue clouds, two yellow stars, and a collection of school supplies including a yellow pencil, a blue ruler, a red and white paintbrush, and a yellow paintbrush.

Welcome!

Forest Hill Elementary

2023-2024
TK/Kinder Enrollment
Informational Meeting

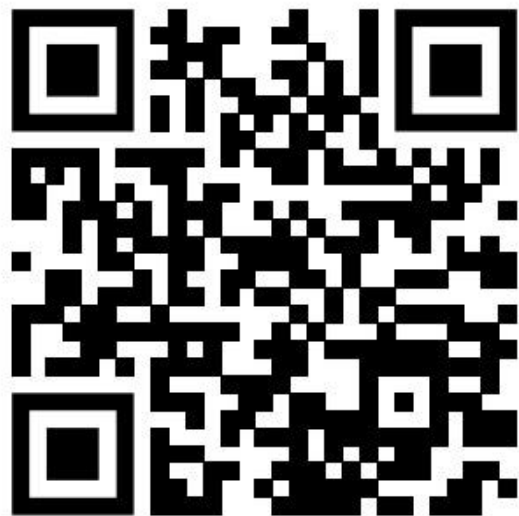
The slide features a yellow background with a white central area. The top edge has a row of yellow circles. The left and right sides are decorated with various school-related icons: a bus, stars, a paper airplane, an apple, a pencil, a beaker, a book, a crayon, a protractor, and a magnifying glass. The word "Presenters" is written in large, light blue letters in the center.

Presenters

- Christy Chalfant, Principal
- Chelsea Armann, Assistant Principal
- Jackie Morris, Administrative Assistant
- Denise Figueira, School/Health Office Assistant
- Maryam Nemazie, PTA

Sign In

Please sign in using this QR code.



No device? No problem! Please sign in at the back table.

Meeting Overview

Objectives:

- Introductions
- PTA
- Standards & PBIS
- Kindergarten Round-up Process
- Typical School Day
- School Programs
- Tour

Registration Items:

- Registration Forms (Online)
- Immunization Record
- Birth Certificate
- Proof of Residency

Be a part of our
PTA!



PTA Program Goals

PTA DOES ALL THAT?!

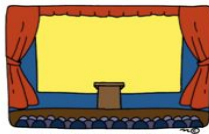
YES, AND MUCH MORE!



ART TEACHER/
CLASSES
K - 5th Grade!



TECHNOLOGY
(Subscription: Accelerated Reader,
News-O-Matic, Brain Pop Jr,
iPads, Headsets, Printers, etc)



EDUCATIONAL
ASSEMBLIES/
FIELD TRIPS



SCHOOL LIBRARY/
LIBRARIAN
(Book Check-Out, Story Time)



TEACHER/STAFF
CLASS SUPPLIES
& GRANTS



STEM
ACTIVITIES



SCHOOL
COUNSELOR



GARDEN/OUTDOOR
LEARNING SPACE
& LIVING CLASSROOM
FUNDS



P.B.I.S. SHIRTS &
AWARDS
(Positive Behavioral
Intervention & Supports)



EDUCATIONAL
ENRICHMENTS
(Eg. Scholastic Readers)



TEACHER/STAFF
APPRECIATION



RECESS
EQUIPMENT
& PLAYGROUND HEROES



EXTRA SAFETY
UPGRADES



PROJECT CORNERSTONE
(Social/emotional)



MULTI CULTURAL
& FAMILY EVENTS



COMMUNITY
OUTREACH



SOCIAL
EVENTS



Forest Hill Information

- 578 students in Grades
Preschool-5th
- 4 SDC Classes
- 80 Staff Members
- Strong and Active PTA
- Volunteer Opportunities
Daily
- 2018 California
Distinguished School Award
- 2019 Blue Ribbon Award
- Family Activities Monthly
(PTA)



PBIS: Positive Behavioral Interventions & Supports

- Be Responsible, Be Respectful, Be Safe
- Students are taught school wide expectations daily, weekly, and monthly.
- Positive wording is used when teaching our expectations.
- Students are positively recognized for following expectations.

What does PBIS look like at Forest Hill?

At Forest Hill, we have developed behavior expectations and proactively teach our little learners what those expectations “look like” in various school settings.

Expectations apply to **ALL** students. **ALL** staff participate in proactively establishing the positive school culture.

Rules for each area of the building developed

- Based on the school-wide expectations
- Agreed upon by staff
- Positively worded
- Taught specifically and in context

What if expectations aren't followed?

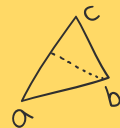
- The student is asked what the expectation is; a reminder is provided if he/she cannot remember
- Depending on the situation, consequences can include coaching conversations with apologies, restorative justice practices, loss of privileges, or other appropriate activities (aligned with the expectation that was not being followed).
 - Example: a student is seen throwing wet paper towels around the bathroom. She might be asked to apologize to Ms. Liz, our custodian, and help pick up the mess.
 - Example: a student is saying rude words to a friend at recess. They might meet with a Falcon Guide (adult yard duty) to problem solve and be coached through a restorative conversation.

Aa

2+2



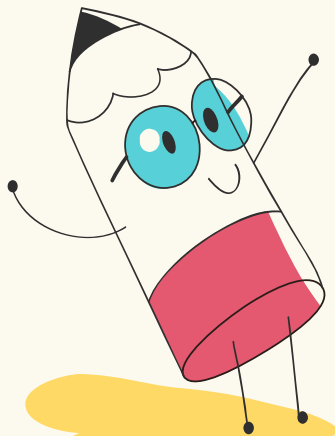
Toolbox



Bb



S.E.L.



Breathing Tool

I calm myself and check-in.



Quiet/Safe Place Tool

I remember my quiet/safe place.

Listening Tool

I listen with my ears, eyes, and heart.



Empathy Tool

I care for others. I care for myself.



Personal Space Tool

I have a right to my space and so do you.

Using Our Words Tool

I use the "right" words in the "right" way.



Garbage Can Tool

I let the little things go.

Taking Time Tool

I take time-in and time-away.



Please & Thank You Tool

I treat others with kindness and appreciation.

Apology & Forgiveness Tool

I admit my mistakes and work to forgive yours.

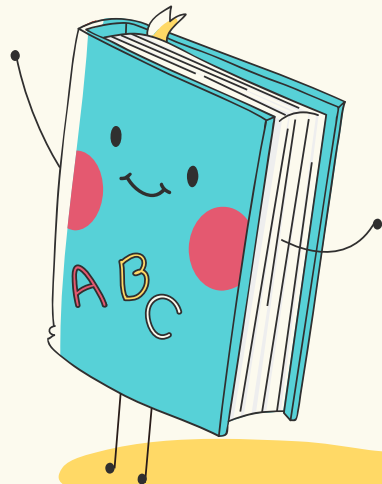


Patience Tool

I am strong enough to wait.

Courage Tool

I have the courage to do the "right" thing.



Our Amazing TK/ Kindergarten Staff

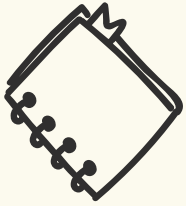
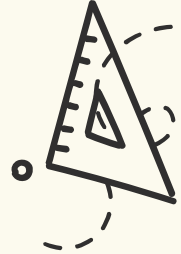
Ms. Laura Nulty
Mrs. Julie Cittadino
Mrs. Honora Hannan
Mrs. Melody Unsinger
Mr. Andrew Tom (SDC)
Ms. Christina Livingston (SDC)



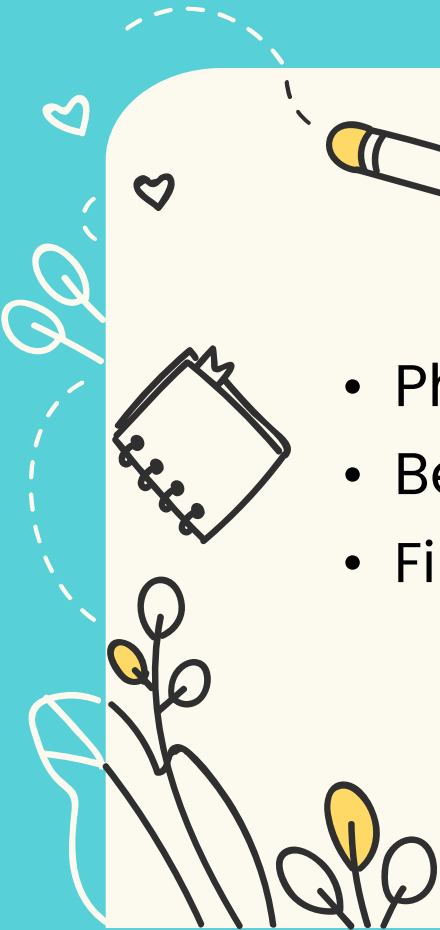


Kindergarten Round Up

Screening Assessment



- Phonemic Awareness
- Beginning Math Skills
- Fine Motor Skills/Drawing

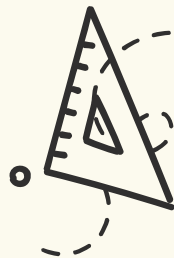




Kindergarten Round Up

Classroom Balance

- Developmental skills
- Academic ability
- Gender & Culture
- Language skills
- Social Skills



School Programs

- Campbell Care
- Pre-School
- Art Program (PTA Supported)
- After School Enrichment Classes
- ELD (English Language Development)
- Cornerstone + Falcon Guides

- STEM Program
- PTA Family Events
- Principal's Coffee
- Toolbox (Social Emotional Program)
- Garden Program
- PTA Lunch Recess Program

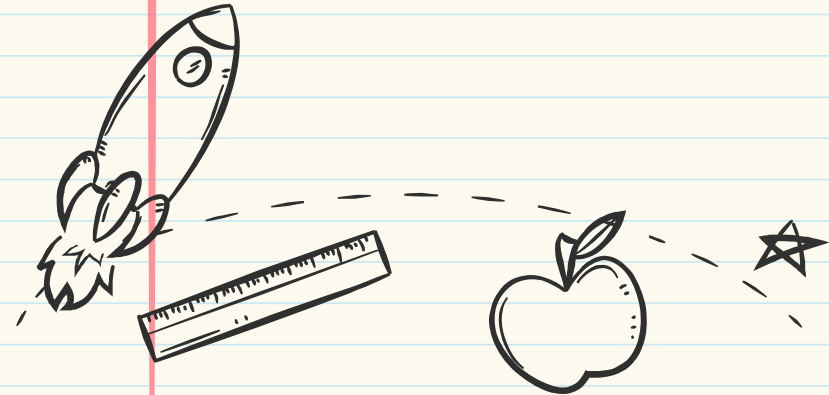
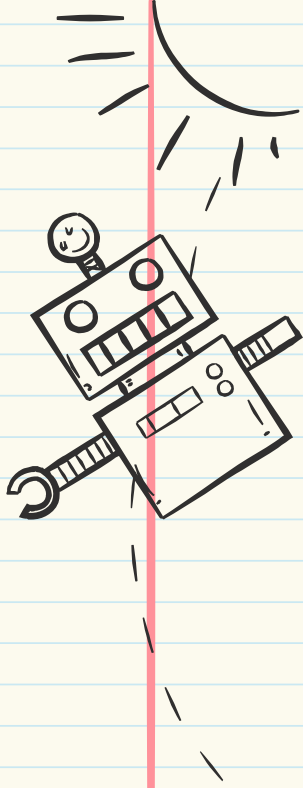
A

B

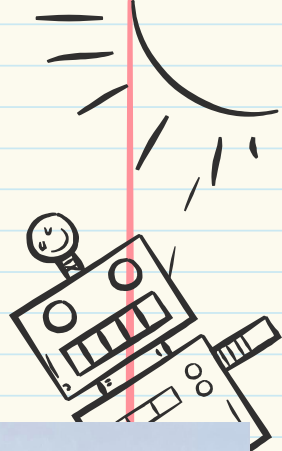
C

Typical School Day

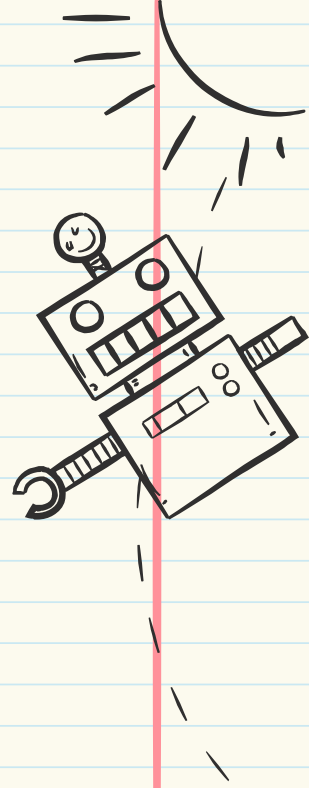
- 8:10-10:10 Language Arts Block
- 10:10-10:30 Snack & Recess
- 10:40-11:50 Math Block
- 11:50-12:40 Lunch
- 12:40-2:20
 - Social Studies
 - Science
 - Physical Education
 - Art
 - Music
 - ELD
 - Library



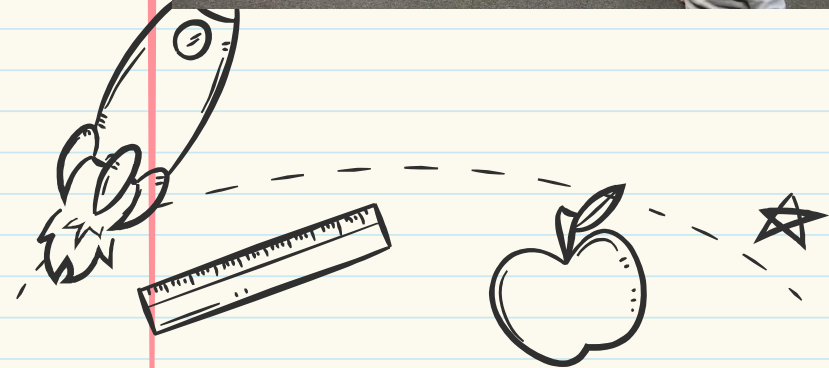
Scenes from School



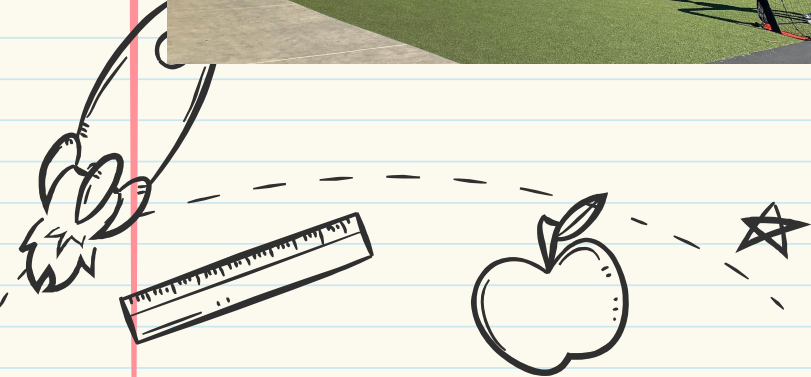
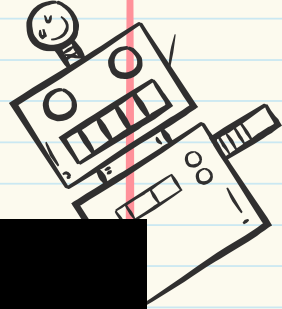
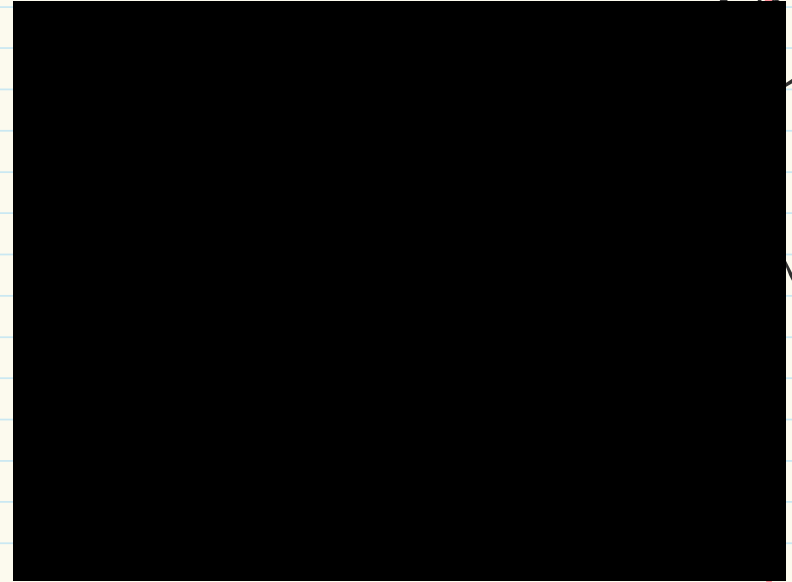
Scenes from School



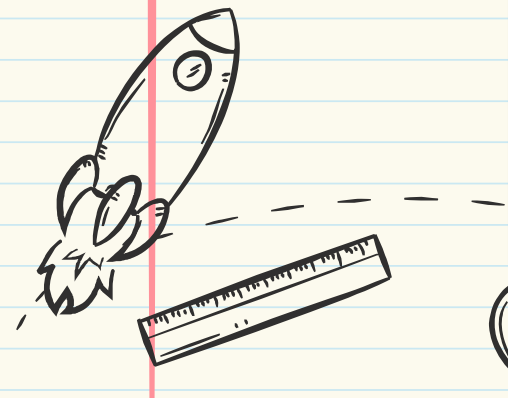
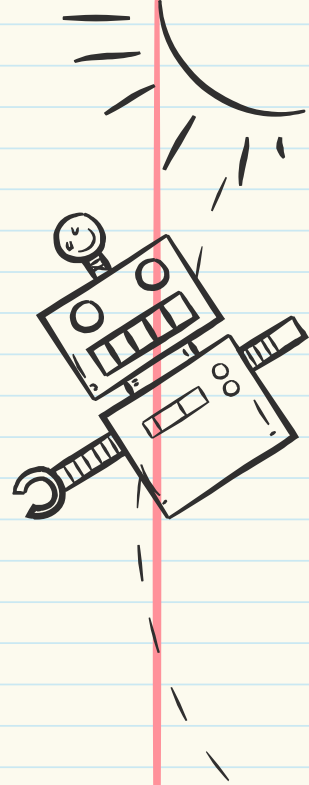
Scenes from School



Scenes from School

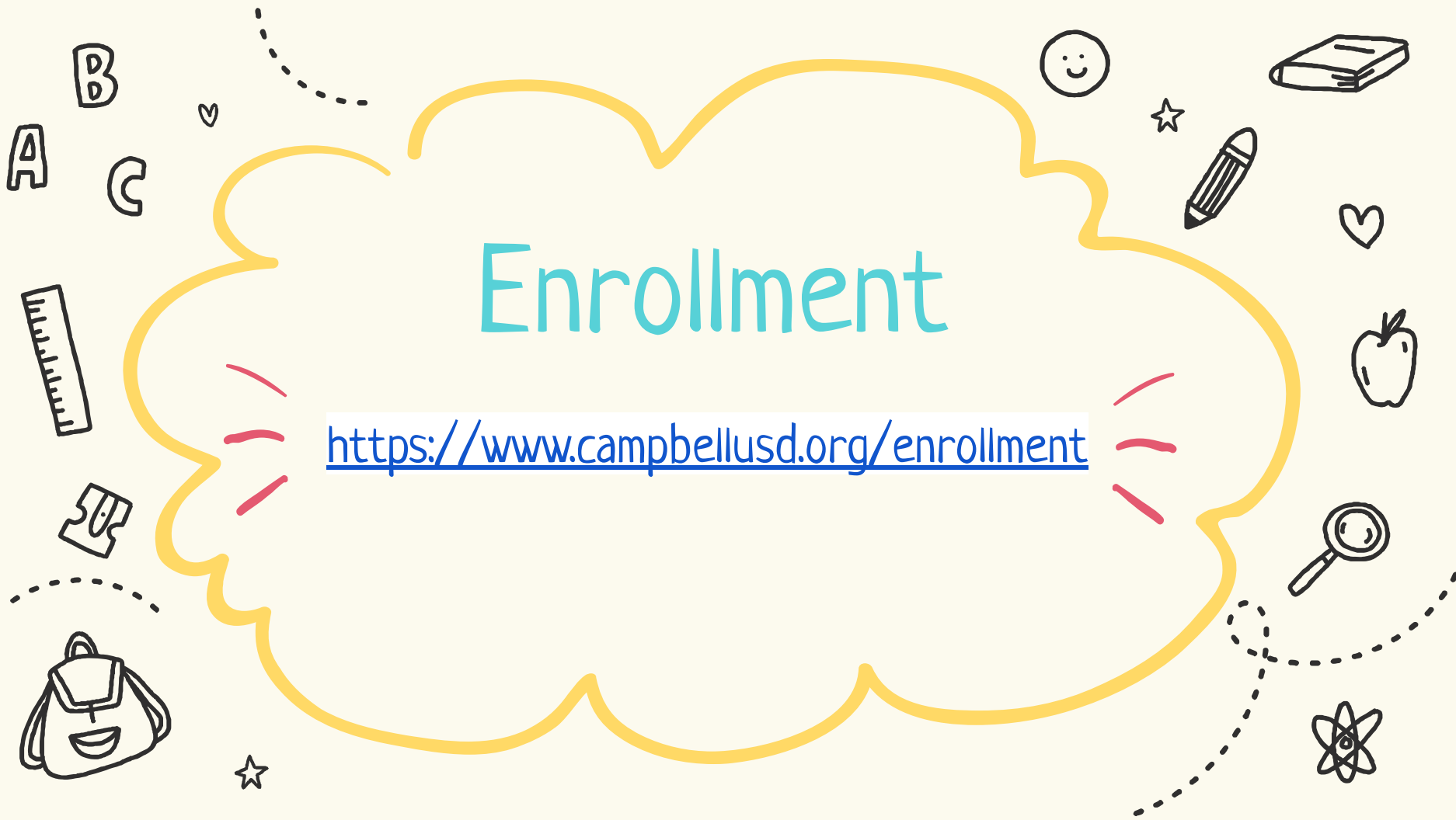


Scenes from School



Enrollment

<https://www.campbellusd.org/enrollment>



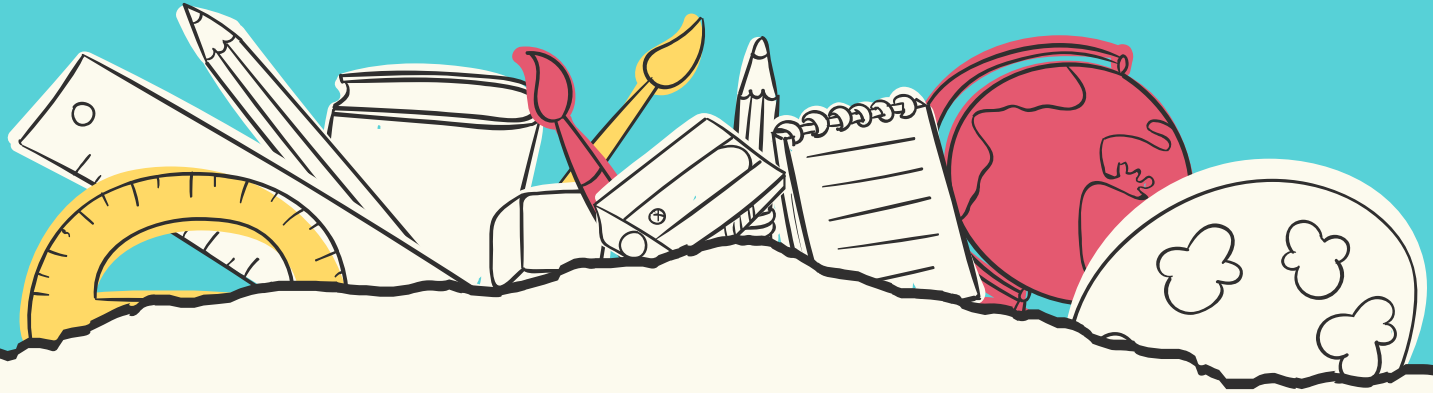


Frequently Asked Questions

<https://www.campbellusd.org/enrollment-faq>

Need support? Reach out to...

Katie Phillips, kphillips@campbellusd.org



Stay connected!

- Please subscribe to our weekly Falcon News
<https://foresthill.campbellusd.org/newsletter/signup>
- Instagram and Facebook: @foresthillelementary

Time for a Tour

