

A photograph of Forest Hill Elementary School. The school has a grey brick facade with brown brick accents. The entrance features a glass door and windows, with a sign above the door that reads 'ADMINISTRATION'. To the right of the entrance are two large windows. The school is surrounded by a paved area and a yellow curb. In the background, there are trees and mountains under a clear blue sky. A large yellow banner with the word 'Welcome!' in a playful font is superimposed over the top of the image, flanked by two yellow stars. The entire image is framed by a black line that forms a stylized 'L' shape on the left and bottom, and a 'U' shape on the right.

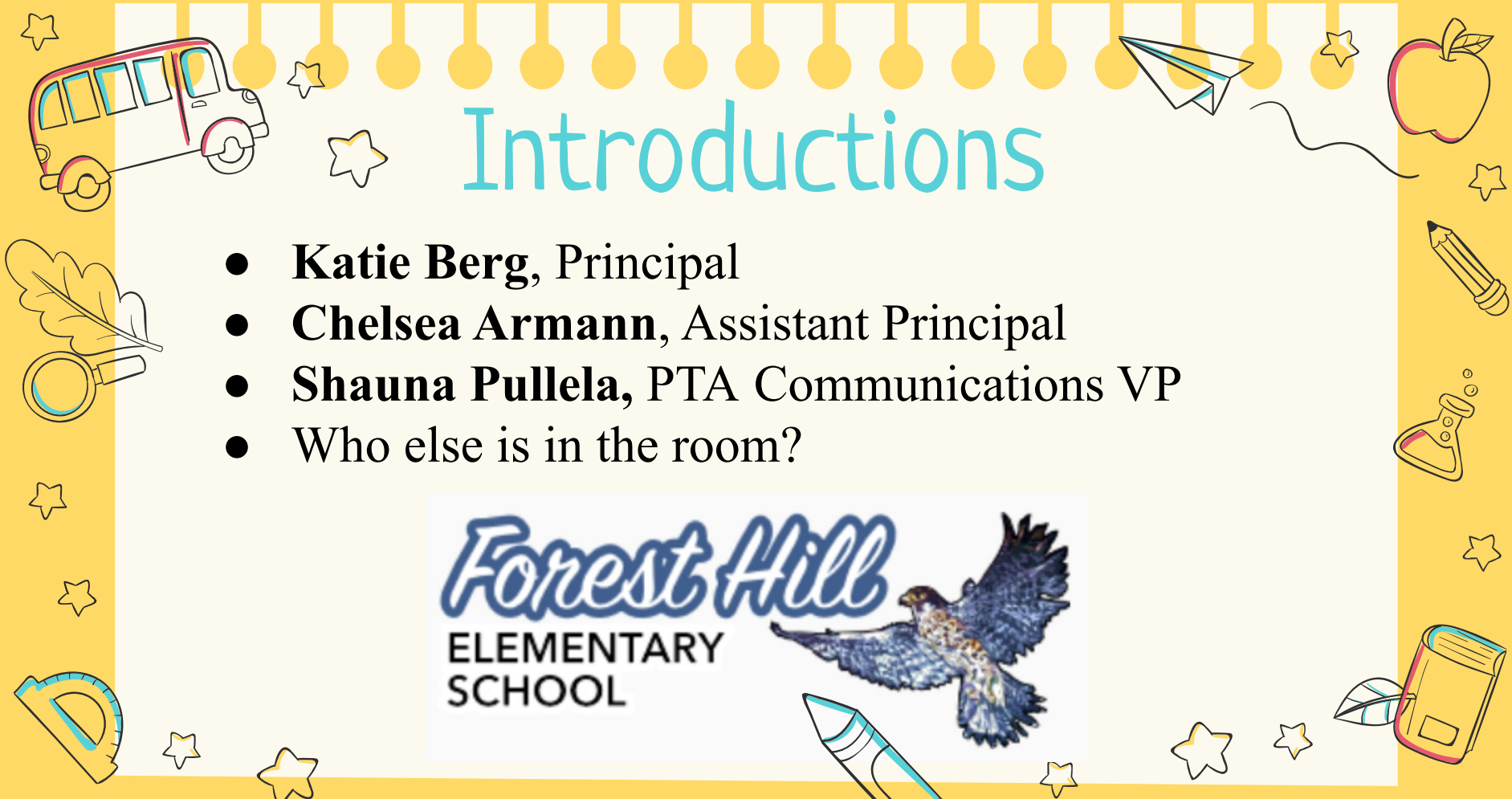
# Welcome!

2026-2027  
TK Enrollment  
Informational Meeting

# Introductions

- **Katie Berg**, Principal
- **Chelsea Armann**, Assistant Principal
- **Shauna Pullela**, PTA Communications VP
- Who else is in the room?

*Forest Hill*  
ELEMENTARY  
SCHOOL



# Meeting Overview

## Agenda:

- PTA Overview
- Social Emotional Focus
- TK Philosophy
- School Programs
- Tour



Be a part of our  
PTA!



**Forest Hill Elementary**  
**PTA<sup>®</sup>**  
*everychild. one voice.<sup>®</sup>*



# PTA DOES ALL THAT?!

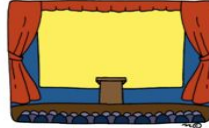
**YES, AND MUCH MORE!**



**ART TEACHER/  
CLASSES**  
K - 5<sup>th</sup> Grade!



**TECHNOLOGY**  
(Subscription: Accelerated Reader,  
News-O-Matic, Brain Pop Jr,  
iPads, Headsets, Printers, etc)



**EDUCATIONAL  
ASSEMBLIES/  
FIELD TRIPS**



**SCHOOL LIBRARY/  
LIBRARIAN**  
(Book Check-Out, Story Time)



**TEACHER/STAFF  
CLASS SUPPLIES  
& GRANTS**



**STEM  
ACTIVITIES**



**SCHOOL  
COUNSELOR**



**GARDEN/OUTDOOR  
LEARNING SPACE  
& LIVING CLASSROOM  
FUNDS**



**P.B.I.S. SHIRTS &  
AWARDS**  
(Positive Behavioral  
Intervention & Supports)



**EDUCATIONAL  
ENRICHMENTS**  
(Eg. Scholastic Readers)



**TEACHER/STAFF  
APPRECIATION**



**RECESS  
EQUIPMENT  
& PLAYGROUND HEROES**



**EXTRA SAFETY  
UPGRADES**



**PROJECT CORNERSTONE**  
(Social/emotional)



**MULTI CULTURAL  
& FAMILY EVENTS**



**COMMUNITY  
OUTREACH**

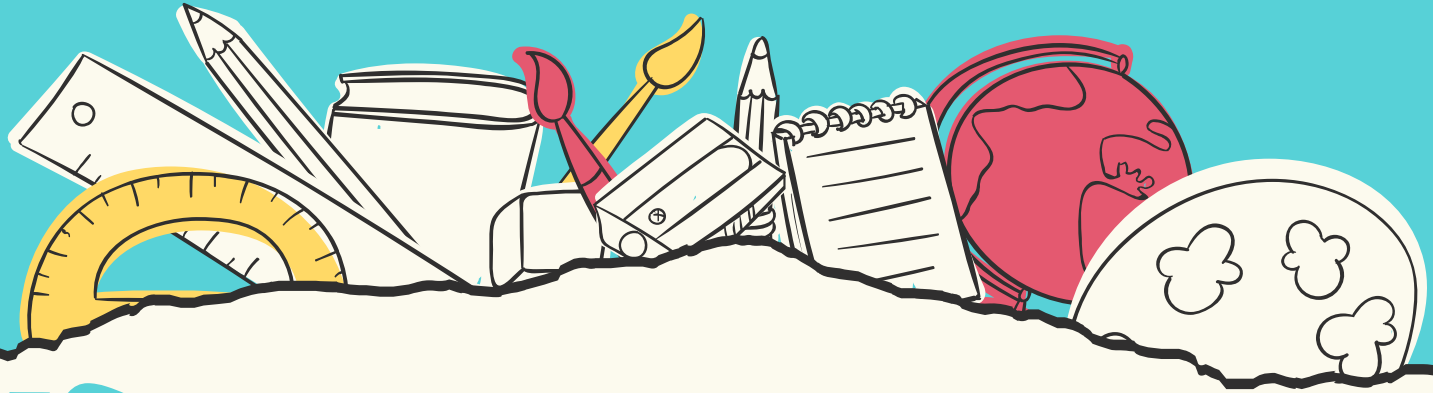


**SOCIAL  
EVENTS**



# Forest Hill Information

- **550 students in grades preschool-5<sup>th</sup>**
- **3 ESN classrooms**
- **65 staff members**
- **Strong and active PTA**
- **Volunteer opportunities daily**
- **2019 National Blue Ribbon Award**
- **2025 California Distinguished School Award**
- **2025 PBIS Silver Recognition**
- **2025 Sprouts Healthy Community Foundation Partner**



# PBIS: Positive Behavioral Interventions & Supports

- Be Responsible, Be Respectful, Be Safe **SCHOOL EXPECTATIONS**
- Students are taught school wide expectations daily, weekly, and monthly. **EXPLICIT INSTRUCTION BY LOCATION**
- Positive wording is used when teaching our expectations. **WHAT TO DO**
- Students are positively recognized for following expectations. **FALCON WINGS**
- Community Circles and Restorative Practices **BUILD COMMUNITY & COMMUNICATION**

Aa

2+2



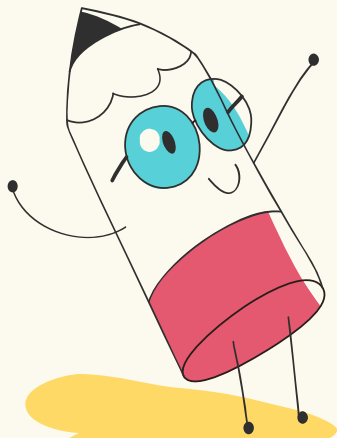
# Toolbox Curriculum



Bb



S.E.L.



## Breathing Tool

*I calm myself and check-in.*



## Quiet/Safe Place Tool

*I remember my quiet/safe place.*

## Listening Tool

*I listen with my ears, eyes, and heart.*



## Empathy Tool

*I care for others. I care for myself.*



## Personal Space Tool

*I have a right to my space and so do you.*

## Using Our Words Tool

*I use the "right" words in the "right" way.*



## Garbage Can Tool

*I let the little things go.*

## Taking Time Tool

*I take time-in and time-away.*



## Please & Thank You Tool

*I treat others with kindness and appreciation.*

## Apology & Forgiveness Tool

*I admit my mistakes and work to forgive yours.*

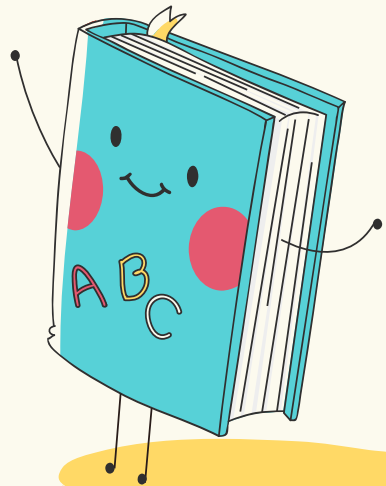


## Patience Tool

*I am strong enough to wait.*


## Courage Tool


*I have the courage to do the "right" thing.*





# School Programs

- 
- A
- Campbell Care
  - Pre-School
  - Art Program (PTA Supported)
  - After School Enrichment Classes
  - ELD (English Language Development)
  - Cornerstone
  - Yoga and PE
- C

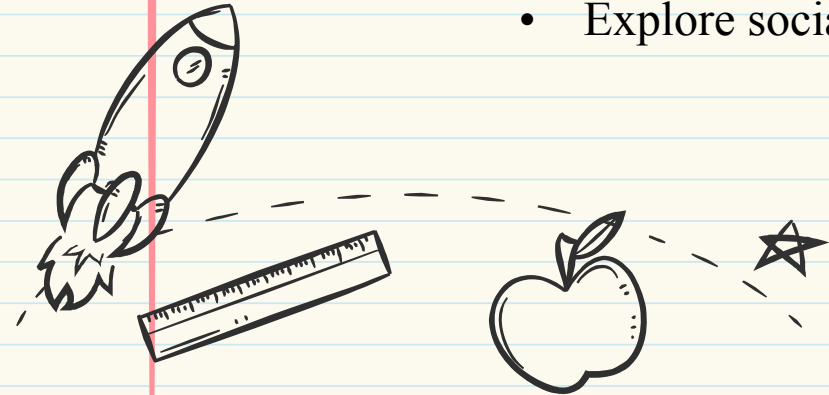
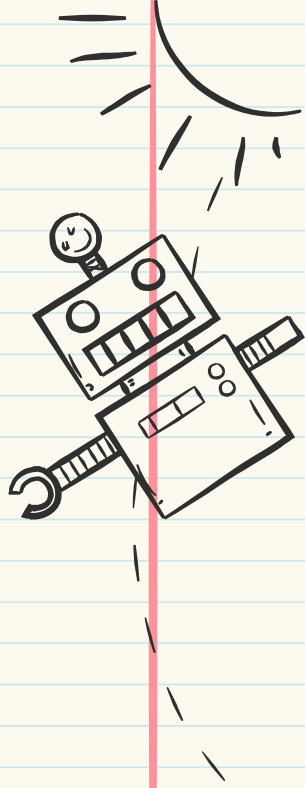
- 
- B
- STEM Opportunities
  - PTA Family Events
  - Principal's Coffee/Pizza
  - Toolbox (SEL Curriculum)
  - Garden Program
  - Daily Lunch Recess Programs
  - AIM (Art, Innovation, Music)

# TK Philosophy

## Learning Through Play

Through play, students...

- Acquire language
- Practice problem solving
- Develop social emotional skills
- Work on boundaries and taking risks
- Explore social roles



Aa

2+2

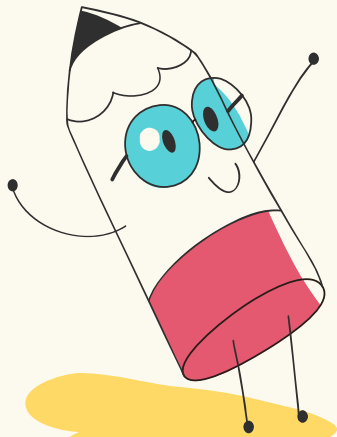
# Creative Curriculum



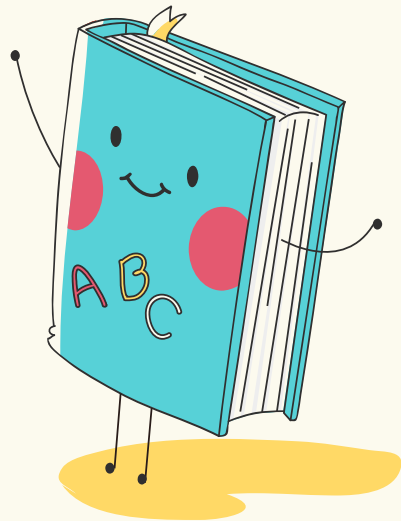
Bb

Creates joy and encourages discovery, inquiry, and curiosity through project-based investigations that places kids at the center of their own learning.

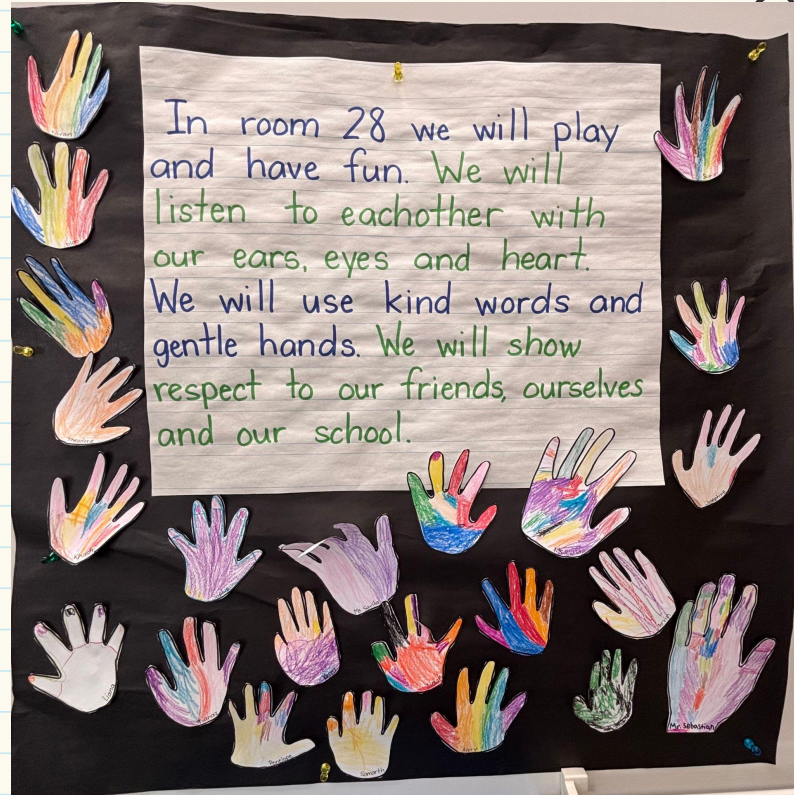
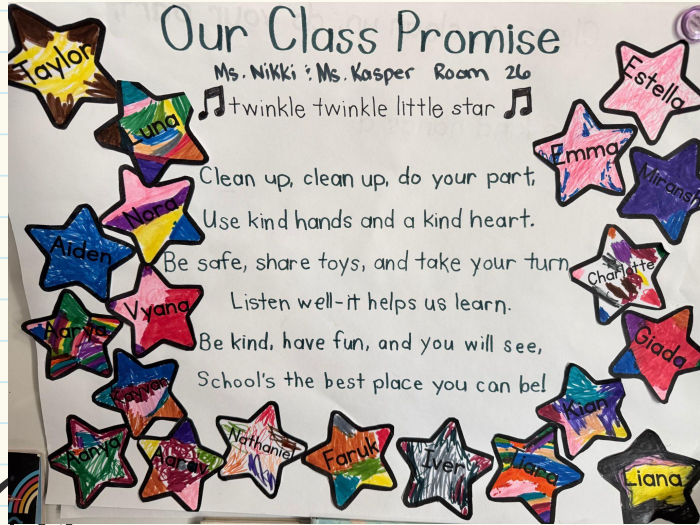
S.E.L.



- \*The First Six Weeks
- \*Percussion Instruments
- \*Architecture
- \*Grocery Store
- \*Seeds
- \*Cameras
- \*Light
- \*Getting Ready for Kindergarten

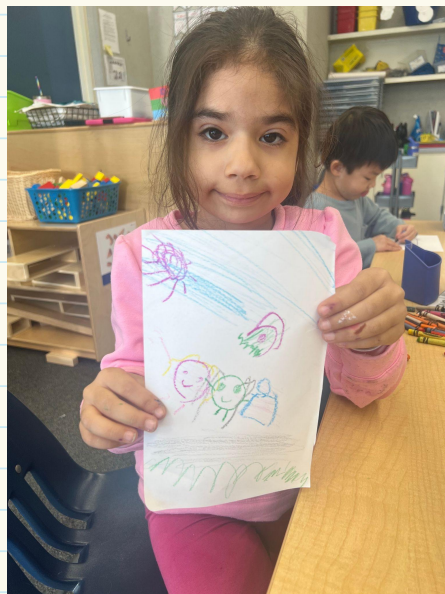
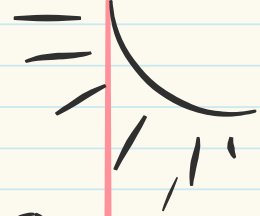


# Classroom Mission Statements



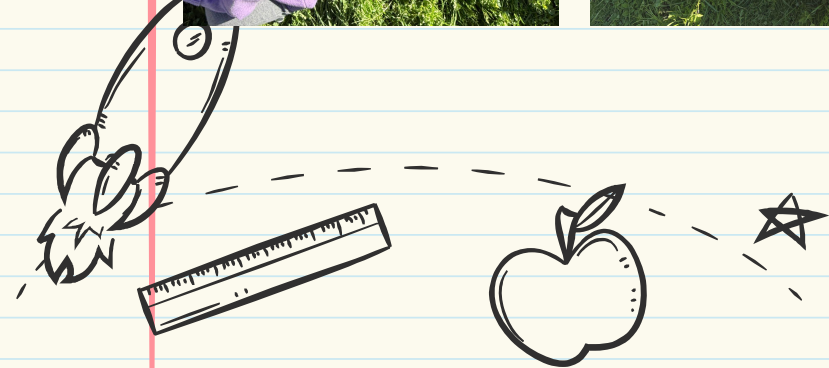
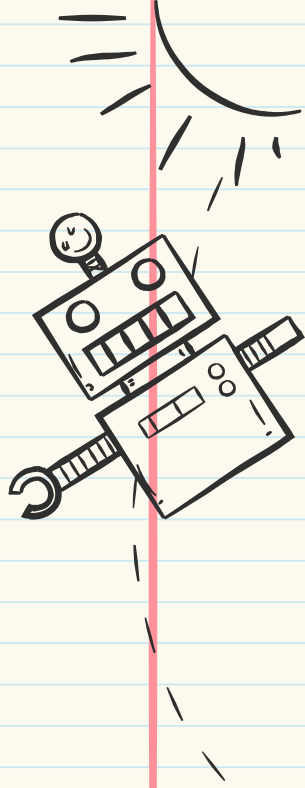


# Scenes from School





# Scenes from School



# Scenes from School





# Enrollment

<https://www.campbellusd.org/enrollment>

## **Registration Items:**

Registration Forms (Online)  
Immunization Record  
Birth Certificate  
Proof of Residency



# Stay connected!

Instagram: @foresthillelementary

<https://foresthill.campbellusd.org/>

*Forest Hill*

ELEMENTARY  
SCHOOL





# Save the Dates

- **Open Enrollment:** Jan 20-Feb 13, 2026
- **TK Round Up (TBD):** Week of August 10
- **First Day of School:** Wednesday, August 19, 2026
  - Wednesdays are 8:10-1:30
  - M/T/Th/F are 8:10-2:20



# ★ School Tour ★



We will return for questions at the end of the  
tour.